





Web



Collaboration



Mobile

Schwerpunkte: USA, UK, Deutschland

SmartAPI

Die freie .NET RQL Bibliothek



RQL – Stärken (the good)



- RQL ist große Stärke von RedDot
 - Steuerung des kompletten Systems
- Einsatz in vielen Projekten, u.a. für
 - Zugriff auf Projektstruktur
 - Batch-Verarbeitung
 - Plugins
- Zugriff meist über Eigenentwicklungen
 - von Kunden, Partnern, Agenturen
 - ASP, PHP, Java oder .NET

RQL – Hürden (the bad)



- Mangelnde/Fehlerhafte Dokumentation
- Unterschiede zwischen Server-Versionen
- Inkonsistente API voll von "Eigenheiten"



- Teure Entwicklung
- Fehleranfällig
- Hoher Testaufwand

RQL – Status quo (the ugly)



- Hoher Entwicklungsaufwand
 - Reverse-Engineering des Protokolls
 - “Eigenheiten” für Spezialfälle
 - Caching
- Nur im Projektkontext getestet
- Nur mit bestimmten Versionen getestet
- An Agentur gebunden
- Unvollständig

Die Rettung

erminas SmartAPI

Agenda

- Was ist die SmartAPI?
- Was kann die SmartAPI?
- Beispiele
- Unsere SmartAPI Angebote
- Lizenz
- Wie bekomme ich die SmartAPI?

Was ist die SmartAPI?

- Eine umfangreiche .NET API für RQL
- Komfortabel
 - Objektorientiert
 - Benennungen analog zum SmartTree
- Schnell
 - transparentes Caching
 - native Ausführung (.NET)
- Sofort einsetzbar
 - keine Installation
 - ASP.NET, Web-Applikation, RedDot Plugin, ...
- International im Einsatz

Weitere Stärken der SmartAPI

- Ausgiebig getestet
 - über 700 automatisch geprüfte Testfälle
 - getestet mit Version 7.5 bis 11.1
- Stabile API
- Kontinuierliche Weiterentwicklung
- Kostenlos und Quelloffen
- Große Abdeckung der Funktionalität

Funktionsumfang

- [-] ➔ **Start**
- [-] ➔ **Administer Application Servers**
 - [+] 📁 Application Servers
- [-] ➔ **Administer Users and Groups**
 - [+] 👤 Directory Services
 - [+] 📁 Users/Groups by Projects
 - [+] 👤 Users
 - [+] 👤 Groups
- [-] ➔ **Administer Projects**
 - [+] 📁 Projects
- [-] ➔ **Administer Database Servers**
 - [+] 📁 Server Connections
 - [+] 🗄 Database Access Modes
- [+] ➔ **Administer User-defined Jobs**
- [+] ➔ **Administer Plug-ins**
- [+] ➔ **Administer Delivery Server**

Funktionsumfang

- [-] ➔ **Start**
 - [+] ➔ **Administer Project Settings**
 - [+] ➔ **Administer Content Classes**
 - [+] ➔ **Administer Publication**
 - [+] ➔ **Browse Navigation**
 - [+] ➔ **Administer Project Structure**

Funktionsumfang

- [-] ➔ Start
 - [-] ➔ **Administer Project Settings**
 - [-] 📁 Project
 - + 📁 General Settings
 - + 📁 Project Variants
 - + 📁 Language Variants
 - + 📁 Folders
 - + 📁 Database Connections
 - + 📁 Publishing Targets
 - + 📁 Publication Structure
 - + 📁 Delivery Server Constraints
 - [-] 📁 Packages
 - + 📁 Authorization Packages
 - + 📁 Detailed Authorization Packages
 - + 📁 Content Class Authorization Packages
 - + 📁 Project Variant Authorization Packages
 - + 📁 Language Variant Authorization Packages
 - + 📁 Folder Authorization Packages
 - + 📁 Workflows
 - + 📁 Publication Packages

Funktionsumfang

- [-] ➔ **Start**
- [-] ➔ **Administer Project Settings**
- [-] ➔ **Administer Content Classes**
 - [+] 📁 0001 - 0200 Content Types
 - [+] 📁 0201 - 0250 Dynamic Content Types
 - [+] 📁 0251 - 0300 Column Dividers
 - [+] 📁 0301 - 0400 Content Area Structures
 - [+] 📁 0401 - 0450 Page Structures
 - [+] 📁 0451 - 0500 Navigation Templates
 - [+] 📁 0501 - 0600 System Templates
 - [+] 📁 0601 - 0700 Javascripts
 - [+] 📁 0701 - 0800 Stylesheets
 - [+] 📁 0901 - 1000 Delivery Server Actions
 - [+] 📁 1001 - 1100 Delivery Server XSLT
 - [+] 📁 9901 - 9999 Temporary Content Classes
- [+] ➔ **Administer Publication**
- [+] ➔ **Browse Navigation**
- [+] ➔ **Administer Project Structure**

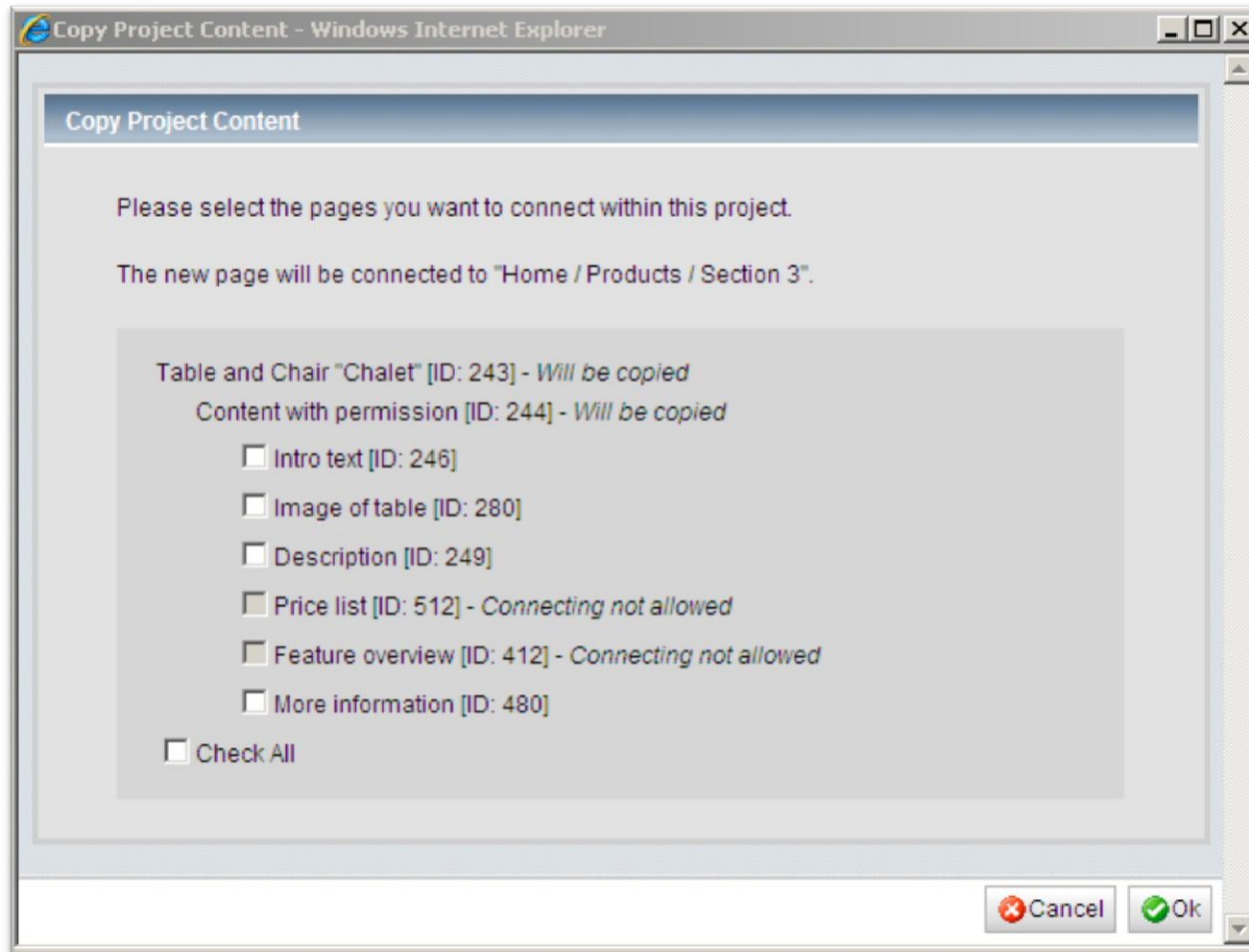
Funktionsumfang

- [-] ➔ Start
 - [+] ➔ Administer Project Settings
 - [+] ➔ Administer Content Classes
 - [+] ➔ Administer Publication
 - [+] ➔ Browse Navigation
 - [-] ➔ Administer Project Structure
 - [-] 📁 Project
 - [+] 🌐 Global authorizations Global Authorization Package
 - [-] 📄 Startpage
 - [+] 📁
 - [+] [ABC](#) andInitialConfigDescription
 - [+] 📄 Visible Links
 - [+] 📄 More visible Links (e.g. referenced)
 - [+] 📄 Hidden Links (not relevant for SmartEdit; needs to be published separately)
 - [-] 📄 Edit Special Pages
 - [+] 📄 Unlinked Pages
 - [+] 📄 Pages Without Main Link
 - [+] 📄 Tree Segments
 - [+] 🗑️ Recycle Bin

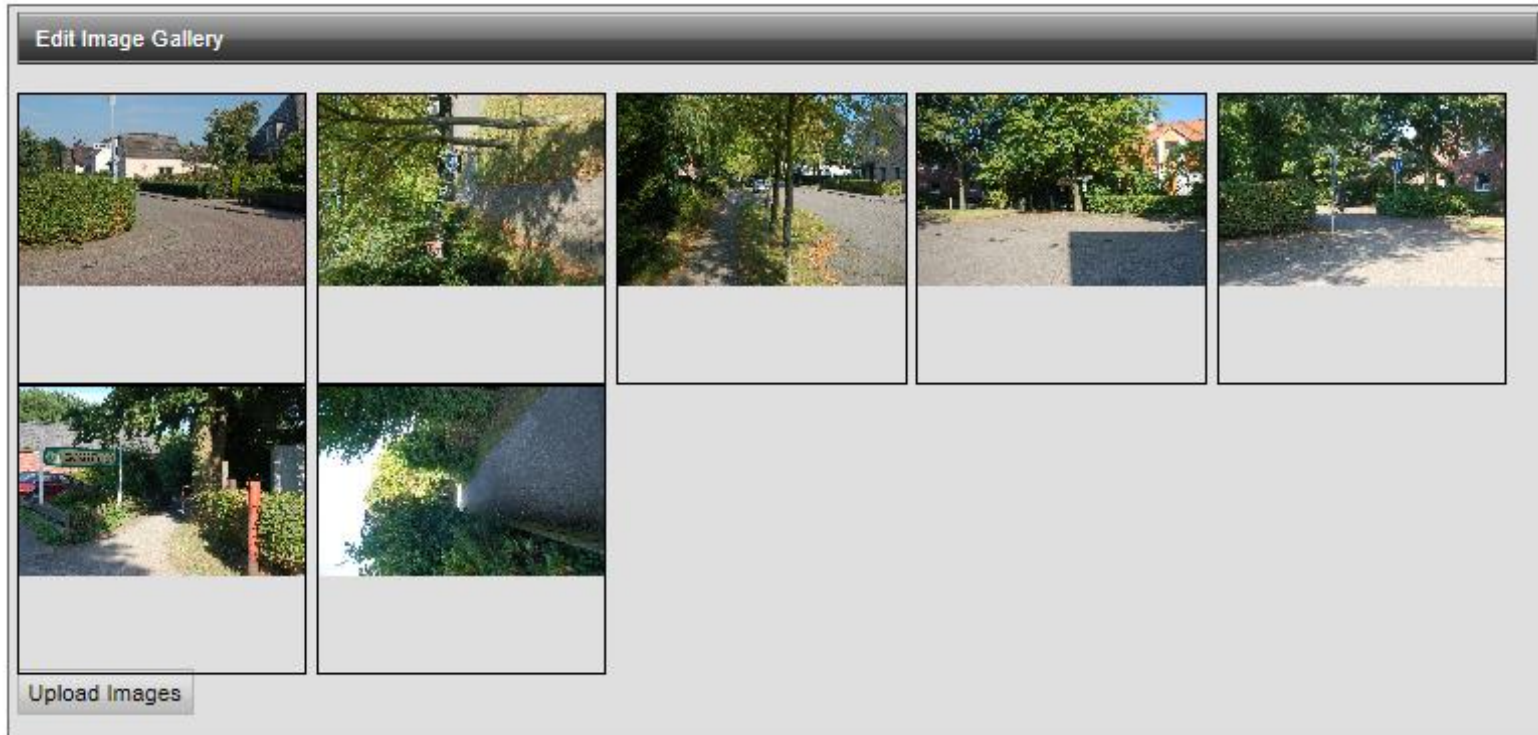


Die SmartAPI im Einsatz

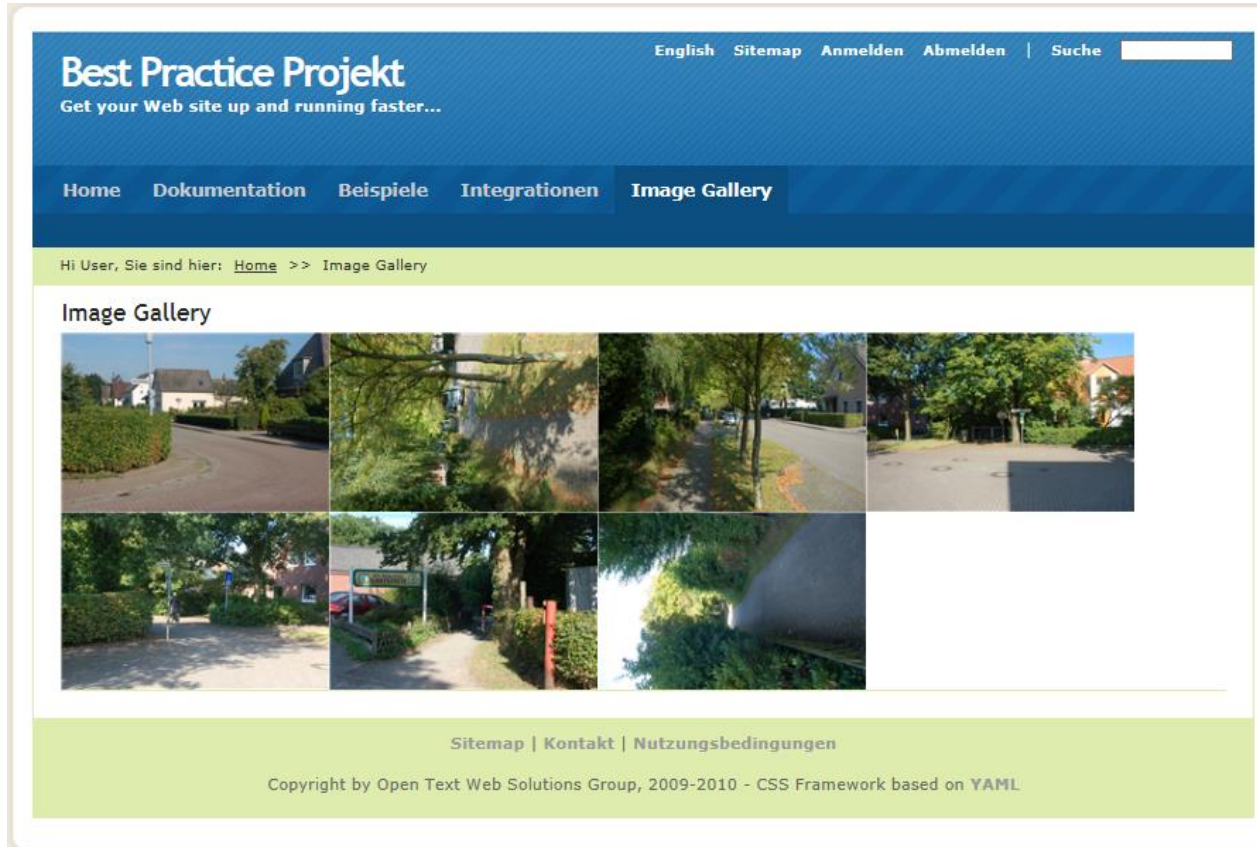
Plugin – Tree Copy



Plugin – Image Gallery



Plugin – Image Gallery



The screenshot displays a web page for 'Best Practice Projekt'. The header is blue with the site title and tagline 'Get your Web site up and running faster...'. Navigation links include 'English', 'Sitemap', 'Anmelden', 'Abmelden', and a search box. A secondary navigation bar contains 'Home', 'Dokumentation', 'Beispiele', 'Integrationen', and 'Image Gallery'. Below this, a breadcrumb trail reads 'Hi User, Sie sind hier: [Home](#) >> Image Gallery'. The main content area is titled 'Image Gallery' and features a grid of seven photographs showing various outdoor scenes with trees and buildings. A footer in light green contains links for 'Sitemap | Kontakt | Nutzungsbedingungen' and a copyright notice: 'Copyright by Open Text Web Solutions Group, 2009-2010 - CSS Framework based on YAML'.

Plugin – Keyword

Keyword Assignment

Filter:

Collaboration:	Mitarbeiter:	Web:
<input type="checkbox"/> [category] <input type="checkbox"/> Confluence <input checked="" type="checkbox"/> SharePoint	<input type="checkbox"/> [category] <input checked="" type="checkbox"/> Boris Crismancich <input type="checkbox"/> Christopher Wennhold <input checked="" type="checkbox"/> Hilmar Bunjes <input type="checkbox"/> Jonas Jacobi	<input type="checkbox"/> [category] <input type="checkbox"/> CMS Sync Tool <input type="checkbox"/> Image Gallery <input checked="" type="checkbox"/> Keyword Plugin <input type="checkbox"/> Option List Plugin <input checked="" type="checkbox"/> OTWMS (RedDot) <input type="checkbox"/> SmartAPI

Web:
<input type="checkbox"/> [category] <input checked="" type="checkbox"/> jQuery mobile <input type="checkbox"/> Phonegap

CMS Sync Tool

The screenshot displays the CMS Sync Tool interface, which is divided into several tabs: Users/Groups, Authorization, Workflow, Category/Keywords, and Content Classes. The Content Classes tab is active, showing two side-by-side views of content classes.

The left view shows a tree structure under '2) Content' with the following items: News List, Shop Product, Shop Product List, Teaser, Test, and Text. Below this is a '3) Marginal' section with 'Jump Navigation'. A mouse cursor is pointing at 'Shop Product List'.

The right view shows a similar tree structure, but with several items marked with a red 'x' icon, indicating they are out of sync. These items are: Extended Shop Product, News List, Shop Product, Shop Product List (highlighted with a green box), Teaser, Test, and Text. Below this is a '3) Marginal' section with 'Jump Navigation'.

At the bottom of the interface, there are three buttons: 'Reload', 'Sync', and 'Automatch'. The 'Reload' button is located below each tree view.

CMS Sync Tool

Shop Product -> Shop Product

Elements

Content

standard_price_dollar

Language Dependent

DEU

Attribute	Source (new)	Target (old)
Sample Value	Preis (in Dollar)	Preis (Dollar)

Language Independent

Attribute	Source (new)	Target (old)
Not relevant for workflow	yes	no
Description	Price (in dollar)	Price (dollar)

Template Variants

HTML

Line	Source	Target
0	<!loRangeRedDotMode><span class="RedDot" style="clear: both;	<!loRangeRedDotMode><span class="RedDot" style="clear: both;
1	<div class="Text">	<div class="Text">
16	<div class="Text">	<div class="Text">
17	<%lang_price%>: <!loRangeRedDotEditOnly><span clas:	<%lang_price%>: <!loRangeRedDotEditOnly><span clas:
18	<div class="Text">	<%lang_price%> (Euro): <!loRangeRedDotEditOnly><sp;
19	</p>	</p>
20	<div class="Top">	<%lang_price%> (Euro): <!loRangeRedDotEditOnly>
21	<a href="#Top" title="<%lang_top%>">	<!loRedDot_standard_price_euro> <!loRangeRedDotEditOnly>
22	€ 	

Die SmartAPI im Einsatz

```
using (var session = SessionBuilder.CreateSession(login))
{
    var project = session.SelectedProject;

    var search = project.Pages.CreateSearch();
    search.PageType = PageType.Unlinked;

    var newUnlinkedPages = search.Execute();
    while (newUnlinkedPages.Any())
    {
        foreach (var curPage in newUnlinkedPages)
            curPage.Delete();

        newUnlinkedPages = search.Execute();
    }
}
```

Wie komme ich an die SmartAPI?

- www.smartapi.de
 - Download fertiger .dlls
 - Dokumentation
 - Ankündigungen und Artikel
- Quellcode unter <https://github.com/erminas/smartapi>
- Google Group [smartapi](#) für Ankündigungen/Fragen/Diskussionen

Lizenz

- Die SmartAPI ist unter der GPL v3 lizenziert
 - Kostenlos benutzbar
 - Quellcode ist öffentlich
 - Änderungen am Code oder Programme auf Basis der SmartAPI müssen ebenfalls unter GPL v3 lizenziert werden

➔ Alle Nutzer profitieren von der kontinuierlichen Weiterentwicklung
- Kommerzielle Lizenzen sind auf Anfrage verfügbar

Unsere SmartAPI Angebote

- Screencasts
- Webinare
- Schulungen
- Consulting
- Custom Development
- Plugins und Produkte

Vielen Dank für die Aufmerksamkeit

Fragen?