

OPENTEXT

The Power of Information



Extend Web Sites with Location Data

Dennis Reil, Manager

Hamburg | 19th May 2014

Disclaimer

The content within this presentation (“Content”) is provided “as is” and without any representations or warranties of any kind from Open Text Corporation or its associates, employees or affiliates (“OpenText”). Content is supplied to you as an Open Text partner, for general information purposes only and any use you make of it is entirely at your own risk. In particular, Content is not intended to form the basis of any formal recommendation in terms of planning, implementing and supporting any OpenText product or solution*.

*To the extent liability in relation to Content is not excluded by the foregoing disclaimer, and except in relation to liability which cannot be excluded by applicable law, OpenText’s maximum aggregate liability to you, your affiliates and associated companies, in connection with Content shall not exceed the amount of fees paid by the participants for the Content, or \$500, whichever is less. Please contact OpenText Global Services if you would like to arrange an engagement to scope such a solution

Agenda

Topic
Motivation
Approach
Demo
Implementation
Further Information

Motivation

Vattenfall E-Mobility Ladestationen in Hamburg

Öffentlicher Parkplatz VATTENFALL
 Hachmannplatz 1
 20099 Hamburg
 Bezirk: Hamburg-Mitte
 • Vattenfall
 Ladepunkt 1: Frei
 Ladepunkt 2: Frei



Information zur Station

- Öffnungszeiten
- Kontakt & Fundsachen
- Wegbeschreibung - So erreichen Sie uns
- Abholung & Rückgabe außerhalb der Öffnungszeiten
- Abweichende Rückgabeadresse

Mietwagen-Kategorien & Services dieser Station

- ✓ PKW & Kombi
- ✓ Coupé & Cabrio
- ✓ Geländewagen / 4x4
- ✓ Fahrzeugwahl per iPhone bei Abholung
- ✓ 24h-Rückgabe
- ✓ Express Counter

VORWEG GEHEN MIT RWE eMOBILITY

LADESÄULENFINDER

Suche
 Geben Sie Ihren Ort oder Ihre Postleitzahl ein

Unkreis: 10 km

Filtern nach
 Gleichstrom (DC) Frei
 Wechselstrom (AC) Besetzt

Suche Zurücksetzen

PFALZWERKE

Privat- & Gewerbekunden | Geschäfts-, Industrie- & Filialisten | Stadt & Gemeindewerke | Netz

Kostenlos durch die Pfalz

Auf dieser Karte finden Sie alle Standorte der Pfalzwerke Elektro-Ladestationen. Hier können Pedelec u Karte und klicken auf den gewünschten Ort. Sofort wird Ihnen die Adresse der Elektro-Ladestation der PF

Map locations: Rehborn, Meisenheim, Morschheim, Rockenhausen, Dannente, Ebersheim, Bock, Eulenbis, Kottweil Schwand, Altenkirchen, Dittweiler, Landstuhl, Hotel und Landgasthof Pfeifertal Untere Pfeiffermühle 4 67695 Eulenbis.

Motivation

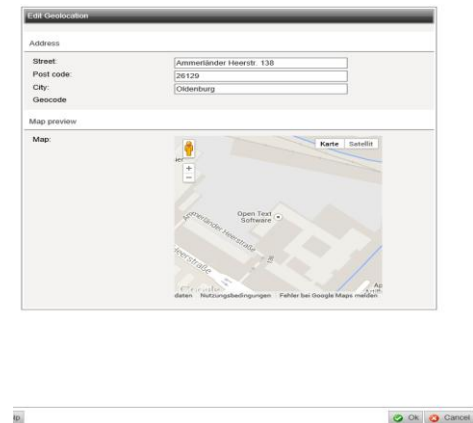
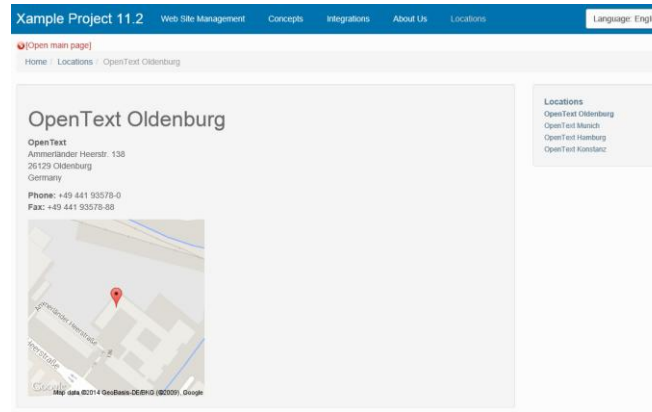
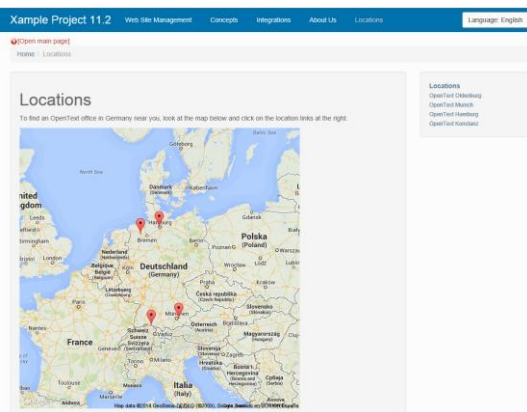
- Modern websites often use geolocation information
 - To show office locations
 - To show e-mobility terminal locations
 - To show rental car locations
 - To easily show directions
- Several APIs available to include maps
 - Google Maps
 - Bing Maps

Motivation

- Take a site builder role
 - Try to implement idea in a project like situation
 - Try out Management Server APIs on our own
- Provide another sample for using Management Server APIs
 - YouTube video element sample already available

Use Cases

- Editors want to easily add a map to a web page showing a specific location
- Editors want to easily show a map aggregating different locations on one map



Approach

- There is no integration available out-of-the-box
- Well-known APIs do not fit or are complicated:
 - Plugins
 - RenderTags
 - Media Element Repository API

Approach

- The custom content element API
 - First used/available in Management Server 11.0
 - Used by the built-in rating element
 - Documented and supported with Management Server 11.1
 - The YouTube video element sample
 - Part of
 - `OpenText.WS.MS.Api`
 - `OpenText.WS.MS.Api.Objects`
 - Allows easy in-depth integration into the Management Server
- Maps element will be implemented using this API

Demo

How to implement?

Technology

- In general
 - Server side part of the element (.NET)
 - Ui part of the element (ASP, ASP.NET, PHP, HTML/CSS/JS,...)
 - Installer part (WIX, MSI, ...)
- In this example:
 - Server side part of element implementation
 - C#
 - Ui part of element implementation
 - HTML5
 - CSS
 - JavaScript
 - JQuery 2.1
 - Installer part
 - WIX 3.8

Custom Content Element API

- Four basic interfaces
 - IContentElementDefinition
 - IContentElement
 - IPageElement
 - IElementVisualizer
- Basic implementations for all these interfaces
 - ContentElementDefinition<T,S>
 - ContentElement<T>
 - PageElement
 - ElementVisualizer<T,S>



It is recommended to use the basic implementations as starting point for a custom element.

Custom Content Element API

- REST API for
 - Getting ContentElement objects
 - Saving ContentElement objects
 - Getting of PageElement objects
 - Saving of PageElement objects

A look under the hood

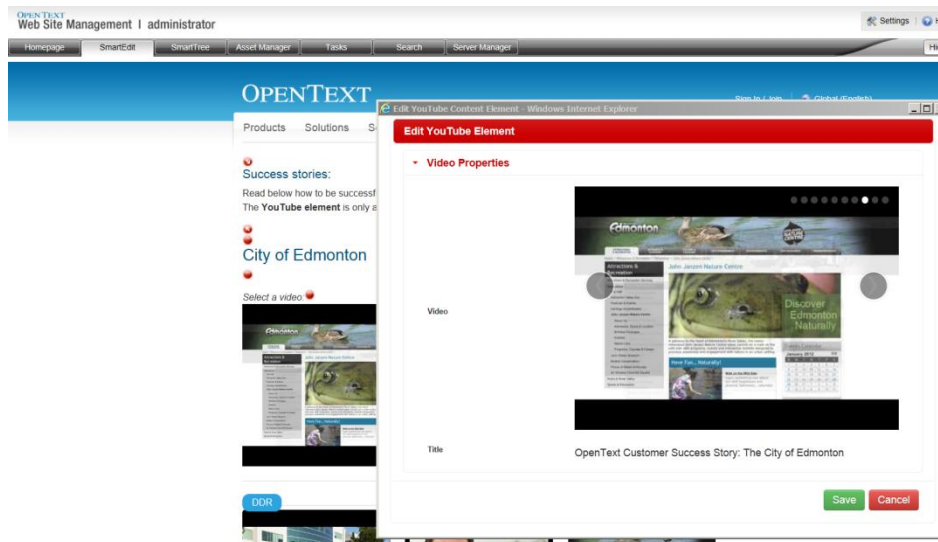
The code

Outtakes

- Element not fully implemented yet
 - No support for form mode
 - No support for Template Editor
- Connections to other elements
 - Get street, postcode, city from connected standard fields
- A custom Google Maps RenderTag

Further Examples

- YouTube Element
 - Fully documented on OTDN



Further Information

- Open Text Developer Network (OTDN)
 - <http://tinyurl.com/otdn-wsm>
- Google Static Maps API v2
 - <https://developers.google.com/maps/documentation/staticmaps/?csw=1>

The screenshot displays the OpenText Knowledge Center interface. At the top, there is a navigation bar with the OpenText logo and 'Knowledge Center' text. Below this is a secondary navigation bar with dropdown menus for 'Enterprise', 'Personal', 'Product', 'Customer Services', 'Partner', 'Help', and 'Sign Out'. The main content area shows a breadcrumb trail: 'Home > All Communities > OpenText Developer Networ... > Library > Web Content Management >'. The primary heading is 'Web Site Management' with a dropdown arrow. On the left, a 'Navigation Menu' sidebar lists various options like 'Community Home', 'Product Spaces', and 'Member Info'. The main content area features two large icons: 'Web Site Management 11.1' and 'Web Site Management API Wiki'. Below these, there are two panels. The left panel, titled 'Pulse From Here', shows a list of items with user avatars and dates, such as 'Dennis Reil 16 days ago' and 'Getting started with R...'. The right panel is a file manager view showing a list of items with checkboxes, icons, and names, including 'Web Site Management 11.0 SP1', 'Web Site Management 11.1', and 'Web Site Management API Wiki'. At the bottom of the right panel, there are icons for 'Copy', 'Move', 'Delete', 'Zip & Download', and 'Zip & E-m...'. The bottom of the screenshot shows a '4 Items' indicator.

Thank you!

Dennis.Reil@opentext.com



@dennisreil



[linkedin.com/in/dreil](https://www.linkedin.com/in/dreil)

OPENTEXT

www.opentext.com



twitter.com/opentext



facebook.com/opentext



linkedin.com/company/opentext