



OpenText Web Site Management 11

Kriegt der Schwan Wind unter die Flügel?

Überblick und Diskussion



Wer sich auf Softwarehersteller verlässt, ist immer verraten ...



- Ursprünglich wollten wir die neue Version 11 bis heute viel intensiver testen und mit fundierte Erfahrungs-berichte aus der Praxis präsentieren.
- OpenText hat sich (wie jeder andere Softwarehersteller?) nicht an seinen Zeitplan gehalten.
- Die finale Version der Version 11 steht bis heute (Stand 10.02.2011) noch nicht im Knowledge-Center zum Download bereit.

... oder ist diesmal doch etwas anders?



- Im Sommer 2011 erhalten ausgewählte Partner eine frühe Version 11 zum Test.
- Im Herbst erhalten ausgewählte Kunden & Partner ein weiteres Release.
- René Stach war hinter jedem her, der sich mit den Beta-Releases auseinandergesetzt hat.
- Feedbacks von den Beta-Testern wurden nicht nur aufgenommen sondern auch - soweit möglich – umgesetzt.

Wir können schon heute einiges sagen.



- Es sind Beta-Tester anwesend
- Es sind Anwender anwesend, die bereits die Version 11 installiert haben
- Wir haben die Release-Notes
- Wir haben die Functions & Features Präsentationen
- Wir haben die Slides aus dem Customer Webinar vom 27.01.2012 von Frank Steffen
- Wir können einen Blick in das finale Release der 11 werfen



Ein erster Blick aus der Vogelperspektive



Availability Schedule

- February 2012
 - General Availability of WSM 11.0 (Management & Delivery Server)
 - Upgrade Package with Test-Licenses in Knowledge Center
- March 2012
 - Marketing Activities
- Q2/2012
 - Management Server remaining integrations and components
 - Management Server official release for Oracle Databases
Customer Support provides testing information, 1. Feb 2012

Supported Platforms Management Server

Type	System	Version
Operating System	Microsoft Windows Server Standard or Enterprise Edition <small>(Western Operating Systems only)</small>	2008 (64 bit), 2008R2
Virtual Environment	VMware ESX Server	3.5.0, 4.x
	Microsoft Hyper-V	2008 R2
Database	Microsoft SQL Server Standard or Enterprise Edition	2008, 2008R2
Browser	Microsoft Internet Explorer	7, 8, 9
	Mozilla Firefox	7, 8
	Apple Safari	5

Fully supported in Q2/2012:

Database	Oracle Server Standard Edition or upwards	10g, 11g
	Oracle Client Software	Oracle Data Access Components (ODAC) 11.2.0.2.1 (64Bit)



Integrations – Management Server

Available with Management Server 11.0 main release:

Type	Module/System	Version
Module	Open Text Web Site Management Delivery Server	10.1 SP2 HF1 or higher, 11.x
Module	Web Compliance Manager Pre	2.2 HF1 (Build 2.2.0.42)
Module	Spellchecker Server	3.5

Available in integration releases in Q1-Q2/2012:

- Content Import Manager (CIM)
- Content Distribution Service (CDS)
- Content Translation Module (CTM)
- Ephox EditLive! Integration

- Media Management Interface
- Content Server DM Interface
- SharePoint DM Interface
- SDL Trados

Supported Platforms Delivery Server

Type	System	Version
Operating System	Microsoft Windows Server Standard or Enterprise (64 bit)	2008, 2008R2
	with Core installation option	2008R2
	Linux (64 bit)	SUSE Linux Enterprise 11
	Solaris (64 bit)	Red Hat 6
Virtual Environment	AIX	10
	VMware ESX Server	6.1
	Hyper-V	4.0, 4.1
Database	Microsoft SQL Server Standard or Enterprise tested with JDBC driver	Microsoft Windows Server 2008R2 2008, 2008 R2
	Oracle Standard or Enterprise tested with JDBC driver	2.0, 3.0 10g, 11g
	MySQL tested with JDBC driver	JDK 1.6 compatible driver 11.2.0.1.0 5.5
	IBM DB2 tested with JDBC driver	5.1.18
	Java VM	9.5
	Servlet Container	3.50.152
Servlet Container	Java Runtime (64 bit)	6.0.18 or higher, see 5.1 Installation Notes
	Apache Tomcat	6.0, 7.0
	IBM Websphere	7
Browser	JBoss	6.1
	Microsoft Internet Explorer	7, 8, 9
	Mozilla Firefox	7, 8
	Apple Safari	5



Integrations - Delivery Server

Type	System	Version
	Web Site Management Server	10.1, 10.1 SP1, 10.1 SP2, 11.0
Search Engine	Common Search	1.1
Search Engine	Livelink (Search)	9.7.1
Search Engine	Content Server (Search)	10 Update 3
Search Engine	Semantic Navigation	1.1
Repository Bridge	Livelink	9.7.1
Repository Bridge	Content Server	10
Repository Bridge	Artesia DAM	6.8 SP2 or higher
Repository Bridge	Artesia DAM Repository Bridge with Media Management	7.0.x
Social Communities	Social Communities	Collaboration Server 8.0, Collaboration Server 8.0.2
Integration	Portal Manager for SAP	10.0



Minimum Hardware Requirements

For Servers:

- Intel QuadCore > 3 GHz (or comparable)
- 8 GB of RAM
- For one instance of Management Server
- For 2-3 Instances of Delivery Server

For Management Server clients:

- Intel Core i3 (or comparable)
- 2 GB of RAM

2.1.2 Social Communities: Rating Element

Use the Rating element when you want authenticated website users to rate content based on a rating system with 1 to 5 stars. The Rating element refers to a Remote Object of Open Text Social Communities which is created automatically on publication. The page containing this element is associated with the rating element.

2.1.3 Better usability of project and language variant selection drop down elements

The project and language variant selection drop down elements have been improved in a way so that you can work more comfortable with many projects or language variants. There is a search/filter option to filter the number of items in the list, there is a hotlist at the beginning of the list with a history of the last 5 projects or language variants the user has had selected. The dropdown element indicates the item which is currently selected. The language variant drop down displays the main language in italics.

2.1.4 Display settings icon in the status bar

A display settings icon has been introduced in the status bar. This icon can be clicked to open the display settings dialog. It indicates if the user has configured display settings which are different from default.



2.1.5 SmartEdit with Drag and Drop

The drag and drop feature in SmartEdit has been enhanced with the option that a double-click on DragHeader in SmartEdit sends the page to clipboard.

2.1.6 Improvement of translation flag red dot

To improve icon perceptibility in translation manager, the waving flag red dot has been substituted by the normal translation flag red dot: If an element value needs to be translated, the translation flag symbol is shown. If an element value has already been translated or does not need to be translated, the normal edit element symbol is displayed.

2.1.7 New action in tasks/search context menu: open page in SmartEdit

A new action is available in the Task and Search modules context menu: open page in SmartEdit. This action switches to the SmartEdit module, navigates to the selected page, and opens the page for editing.



2.1.11 Modifications of LDAP account system import functionality

Management Server 11.0 is using a .net based API for LDAP import functionality. With the new API there are two main changes.

Bind DN / Log in

In the past, two different types of Log In definitions to query the LDAP server were supported. It was possible to specify either the complete DN for a user or to specify the Log In name. With Management Server 11, specifying the Log In via the complete DN is not supported anymore. It is required to use the Log In name. In case of querying ADS, it can be necessary to specify the domain.

Filter

The previously used API has implemented some fix mappings, for example the attribute uid was mapped to sAMAccountName. With Management Server 11, these mappings are not available anymore and you might need to fix the attributes manually.

2.1.8 Option 'ClosePage RedDot saves pages as draft' by default

The option *ClosePage RedDot saves pages as draft* is now activated as default for new projects. If this option is not activated, the pages edited in SmartEdit will automatically be submitted to the workflow when closed. We recommend selecting this option for existing projects to prevent pages from being unintentionally submitted to the workflow.

2.1.1 OpenText Search Engine Connector

The OpenText Search Engine platform consists of the core OpenText ECM Suite indexing and search capabilities.

The search engine connector for OpenText Search Engine supports the following server:

- OpenText Common Search
- OpenText Livelink ECM - Enterprise Server
- OpenText Content Server

The license key OTSE is required to use this functionality.

2.1.2 OpenText Semantic Navigation Search Connector

OpenText Semantic Navigation (OTSN) is a semantically-powered search and discovery solution. It combines text analytics, information retrieval and content management. OTSN is a platform that offers semantically relevant content based on keywords, entities, and categories and presents it in easy to browse facets. To do so, OTSN transforms content into a standard format that enables the aggregation of content from multiple sources. The content is then automatically analyzed and enriched with meaningful semantic metadata.

<http://www.opentext.com/2/global/products/products-opentext-semantic-navigation.htm>

The license key OTSN is required to use this functionality.



2.1.3 Social Identity Authentication Connector

User authentication using an existing identity from Facebook, Twitter is a powerful registration tool. Using this authentication connector enables your website to allow people authenticate and register using their social identity of Facebook and Twitter.

No additional license key required to use this functionality.



Important – Limiting User Rights

When using the Create user check box, make sure to limit the rights of the users that are created, so that new users cannot unintentionally access restricted resources.

- To limit the creation of users: Configure constraints to control when an authentication connector allows authentication.
- To limit user rights: Assign groups and roles to the users.

2.1.4 External Authentication Connector

In intranet environments the user authentication should be handled by a central authentication instance, like Windows Domain Authentication. The authentication process of a user should be done by an external system, like IIS, or software library, like WAFFLE. After this authentication process is done the authenticated username is passed to the external authentication connector of Delivery Server.

No additional license key required to use this functionality.

*Separating Servlets for Administration Interface (**iauth**) and Project Content Delivery (**xchg, xbc...**) / Separation of internal and external sessions*

The default Delivery Server Installation now comes with two physically separated servlets, the *XmapsServlet* (mapped to /cps/rde) for project content delivery and the *IdeaServlet* (mapped to /cps/idea) used to access the admin interface. The physical separation allows you to completely deactivate the admin interface on servers in the DMZ, so that administrative access is only available on Delivery Servers behind the firewall. Both servlets use their own session pool so that sessions cannot be shared between the servlets.

Extend User Import LDAP

- Option to import filtered user groups into Delivery Server user repository

Extend User Sync with Collaboration Server

- Assignments of user groups are synced between Delivery Server and Collaboration

Extend Delivery Server Cluster Functionality

- Define multiple Central/Master Server
- Automatic failover



Removed Features

- ACCESS (MDB) databases are no longer supported as a database product (for database connections)
 - Microsoft has deprecated the Microsoft Jet database engine
 - Workaround: access via 64bit ODBC data source (System DSN) using the Microsoft ACE database engine
- Media Element feature 'convert selected documents'
 - Option 'Insert into page as HTML' has been removed
 - PDF conversion option always uses an external PDF converter which needs to be configured in the Server Manager module

2.2.2 Export instances feature has been removed

The SmartTree Content Class feature export instances (Content Class with Instances -> Export Instances) is not supported anymore. If it is required to export content as XML files we recommend creating a project variant and templates with XML formatting.



Was wir hoffentlich nicht vermissen werden

2.2 Deprecated Features

The following features have been deprecated in this release.

Verity K2 Search Engine

Verity K2 is in maintenance mode. The support for the OEM version used by OpenText ends in June 2012. Verity K2 supports only a few platforms. This is a limitation for the search capabilities of OpenText Web Site Management Delivery Server. Starting with OpenText Web Site Management Delivery Server 10.1, the new standard search engine is OpenText Common Search. Customers are asked to migrate from Verity K2 to the new standard or any other supported search engine by June 2012.

Web Components

OpenText Web Solutions Web Components 10.0, which bundles Forum, Blog, Wiki, Category Tree, Comments, Tagging, Voting, Livelink DM, Livelink Discussion, Calendar, Event Calendar, and Moderation, have been developed for Delivery Server 10. The new standard for Web 2.0 applications in OpenText Web Site Management Delivery Server is the integration of OpenText Social Communities through the extended portlet and new HTTP connector. Customers are asked to contact their OpenText representative so that a migration path can be developed. The general concept of Web Components, to build presentation components for the Delivery Server, will still stay as a feature in the product.

SSO Module A005

The A005 module is used as a single sign-on method to register a Windows Authenticated user at Delivery Server. The A005 module uses the NTLM protocol to identify the user. Use the External Authentication Connector instead, see chapter 2.1.4.



Was wir hoffentlich nicht vermissen werden



Der Blick ins Innere des Management Servers

Customer/Partner Feedback of Technology Preview II



▪ Performance

- 2 VMs identical Setup, same Project, Export Project (6.5GB)
MS 11.0: 5min ↔ MS 10.1: 35min
- Feels like it's twice as fast
MS 11.0: 1CPU, 4GB, local DB ↔ MS 10.1: 8CPU, 8GB, remote DB

▪ Parallel Processing

- Publication two Language Variants + Projectimport + Projectexport and using Navigationmanager, SmartEdit, SmartTree still feels fast!

▪ Updateability

- Compared to other products, I'd like to praise the updateability. Other products usually require manual intervention. But a MS update runs automatically. This is very good.

Management Server 11 using .NET4 and 64-bit



- Design Principles
 - 64-bit Architecture based on .NET4
 - Windows Communication Foundation (WCF)
 - New MSI-based Installation
 - New .NET Database Access & Oracle-Integration
 - Updated Components
- Advantages
 - Better resource usage
 - Better Support of Multiprocessor-Systems
 - Unlimited memory usage
 - Better performance of parallel requests
 - Improved Efficiency for further development of Management Server

Architectural changes

RQL Web Services

- Now based on Microsoft Windows Communication Foundation WCF
- The RQL Web Services are the only supported interface for integrations and plug-ins
- Other integration points are deprecated or not available anymore
- New URL: <http://localhost/CMS/WebService/RqlWebService.svc>

- Improved performance of parallel requests
- Improved Efficiency for further development of Management Server

Architectural changes

Separated asynchronous Queues for individual projects

- Possibility to define separated queues for individual projects
- For example dedicated publishing queues can be defined for special projects
- Separated Queues are possible for the following processes:
 - Manually or automatically started publication jobs
 - Automatically started publication jobs by workflow reaction
 - Transfers to FTP publishing or Delivery Server targets
 - Page deletions on all publishing target targets
 - Administration of published pages and assets on publishing targets
 - For failed deletions of pages during the first attempt of RedDot.CMS.Cleaner.Ftp

Architectural changes

Roll back Hotfixes of Web Site Management Server 11

- Web Site Management Server 11 supports to roll back hotfixes
- It is supported to roll back the installation of software components
- It is not supported to roll back content changes made with the new hotfix version

- For failed deletions of pages using
RedDot.CMS.Cleaner.Ftp

7.1 Known Issues in 11.0

The release of Management Server 11.0 does not support using Oracle databases for administration or project databases. It is possible to test Management Server 11.0 with Oracle Database Server under certain conditions. If you intend to do so, please contact OpenText Customer Support for instructions. Availability of full support for Oracle Databases is planned for Q2/2012.

The integration with OpenText Web Site Management Delivery Server and Web Compliance Manager Pre are available with Management Server 11.0 main release. The other supported integrations and modules will be made available in dedicated releases during Q1-Q2/2012.

- For installation, it is required to open an elevated command prompt and to start the installation process with the command *msiexec*.
- Using "Transfer Data Storage" leads to incomplete part-tree-exports with assets missing
- In special cases, balancing of asynchronous jobs in a cluster can overload single cluster nodes
- "Undoing changes" for templates will not update the changes
- Option "Language variant-independent content" does not work with media element
- Error message "Login failed for user 'Domain\Server name\$'" in create page definition action when using windows authentication
- Option: "Also users without the Translation Editor role can delete a page in all language variants" doesn't work for users without "Translation Editor Module"
- Insert publishing jobs into project dependent queue is not possible
- Structure element LIST ignores "Syntax that conforms to XHTML in the preview and SmartEdit"





Hinweise aus der Montageanleitung



Three things before you start?

- Read the release notes
- Read the release notes
- Follow the advice given in the release notes



Wichtige Information zur Vorbereitung

5 Installation and Upgrade Notes

5.1 Installation Notes

5.1.1 Attention: Restrictions about using Oracle Databases



The release of Management Server 11.0 does not support using Oracle databases for administration or project databases. It is possible to test Management Server 11.0 with Oracle Database Server under certain conditions. If you intend to do so, please contact OpenText Customer Support for instructions. Availability of full support for Oracle Databases is planned for Q2/2012.

5.1.2 Attention: Migrate from Management Server versions older than 10.1 SP2



You can migrate to Management Server 11.0 only from Management Server 10.1 SP2. For migration of installations of versions of Management Server (or RedDot CMS) older than 10.1 SP2 it is required first to migrate the installation to Management Server 10.1 SP2.

5.1.3 Migrate a single server from Management Server 10.1 SP2 to version 11.0

The migration procedure to Management Server 11.0 consists of an installation of Management Server 11.0 with an existing Management Server 10.1 SP2 administration database.

On a single server, you must perform the following steps

1. Uninstall Management Server 10.1 SP2 or replace the server
2. Install Management Server 11.0 and connect to the existing databases.
3. Reboot the server.

Note: When exchanging a server please have in mind to backup project relevant data like file folders or local databases if they exist on the server.

Note: After performing the upgrade to Management Server 11.0, you can delete the old language database ioApplication.

Where do you start?

I am on a 32 bit machine:

- Get a 64bit machine and MSSQL Server
- Scenario A: Install new server
- Scenario B: Migrate Projects

I just want to try or test:

- See prior
- Contact Customer Support if you want to test with Oracle

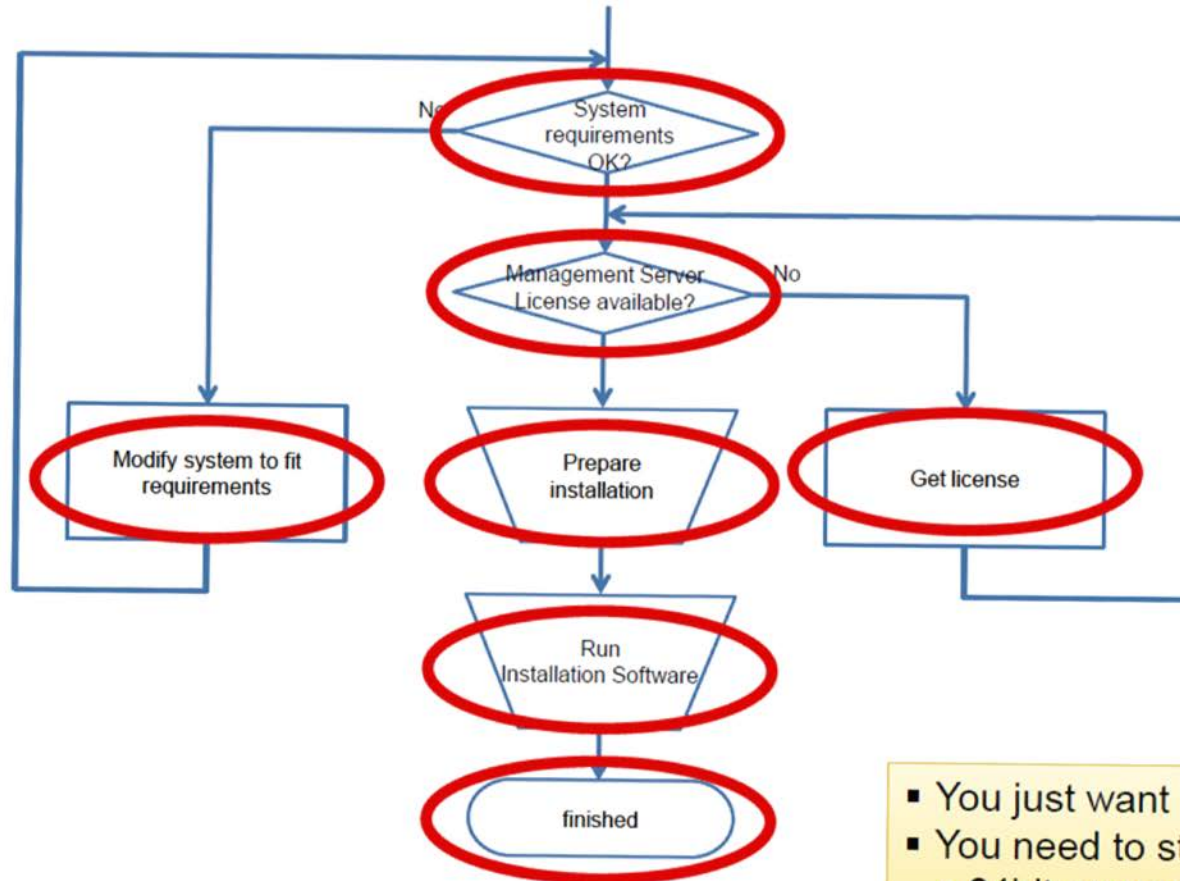
I already run a 64 bit machine:

- Test first
- Scenario C : Update single server

I have a cluster:

- Test first
- Node-by-node: Follow instructions in release notes

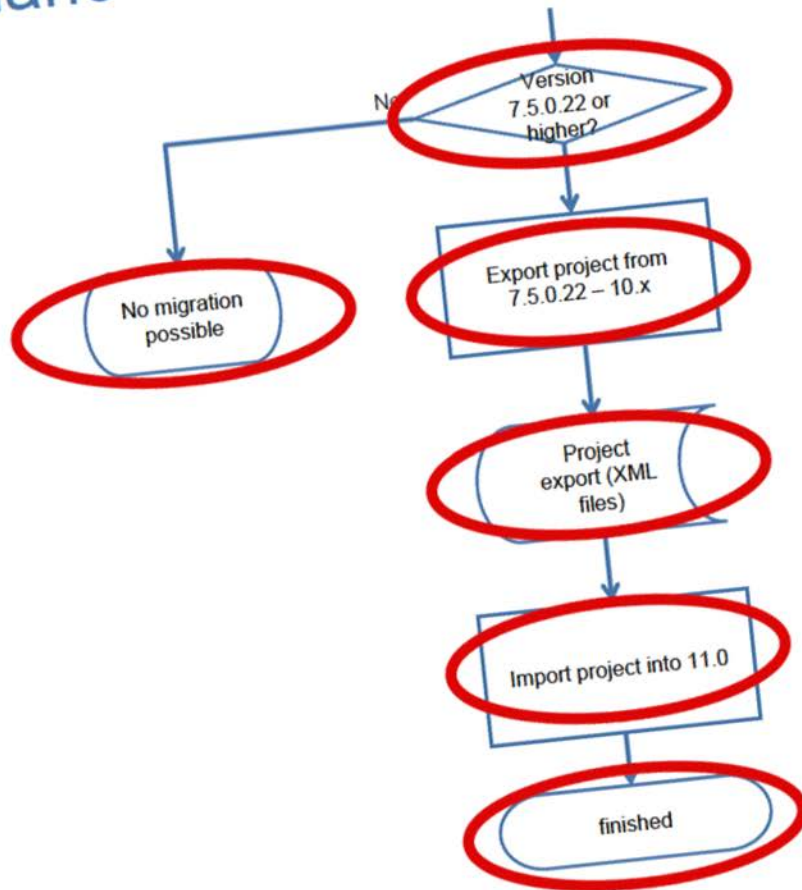
Scenario A: Install single server



- You just want to test V11
- You need to start new on a 64bit server

- Test first
- Node-by-node: Follow instructions in release notes

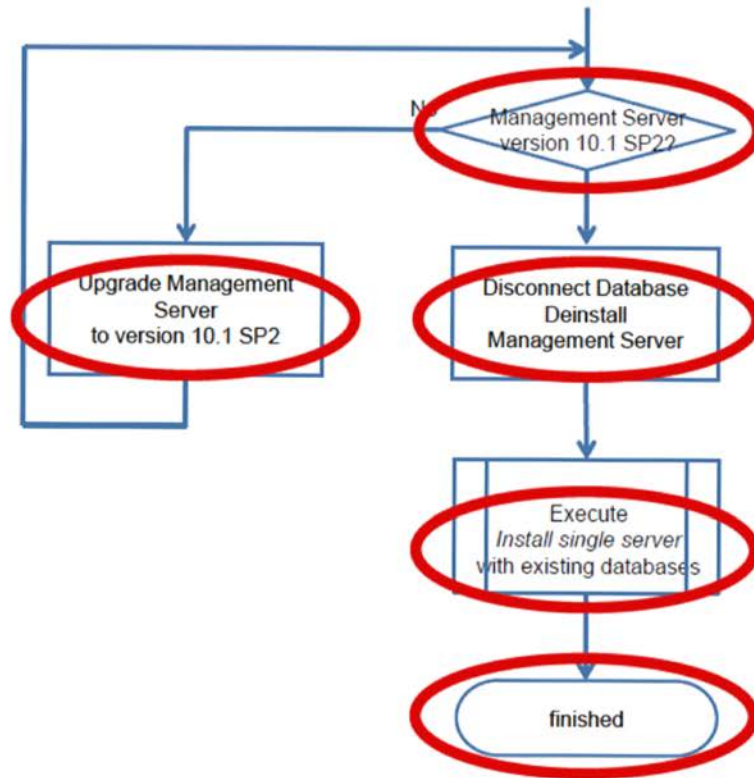
Scenario B: Project Migration



- You just want to test V11
- You need to start with a new server

- Node-by-node: Follow instructions in release notes

Scenario C: Update single server



- You already tested V11
- You are already on 64bit

- Node-by-node: Follow instructions in release notes

Upgrade Delivery Server from Version 4.0 SP1 HF 26 or higher

- Read the release notes
- Test first
- Create transport packages with projects, connectors, ...
- Install Delivery Server
or Create and deploy WAR-Archive
- Import/read transport packages
- Publish your project from Management Server
- Create a new search index

- Test first
- **Node-by-node: Follow instructions in release notes**

Wie geht es weiter?

- Qualitativ hat die V11 in den Beta-Tests bereits einen guten Eindruck gemacht – **jetzt kommt die Praxis...**
- Die Version 11 wird uns auf den kommenden Tagungen weiter begleiten ...
 - Interactive Forums
 - Migrationsberichte
- Regelmäßige Teilnahme an den von OpenText angebotenen Webinaren hält einen auf dem aktuellen Stand
- Es wird wie bei der Einführung der Version 10 Veranstaltungen von Partnern geben, die sich speziell mit der Migration auf Version 11 auseinandersetzen